



YASHRAJ
BIOTECHNOLOGY LTD.
a bio-quest for ever



The **YBL** Newsletter

Volume 4, Issue 1, Jan 2017



- - - - I N S I D E T H E I S S U E - - - -

➤ **Message from the promoter Directors**

➤ **Our Recombinant & Native antigens**

➤ **CACLP 2017**

Dear Readers,

Welcome to this issue of Yashraj Biotechnology's Newsletter. It is indeed a moment of great pleasure to release the first issue of our newsletter in 2017. In the last quarter of the 2016, we successfully finished the purification of Native RBP and the stability studies are on. We have also undertaken purification of native Transferrin & Alpha-2 Macroglobulin (A2M) antigens as a new project at our R&D lab.

In the second week of March, we will be at the world's one of the biggest expo for clinical chemistry CACLP at Qingdao, China. We cordially invite you to visit our booth # H4-219.

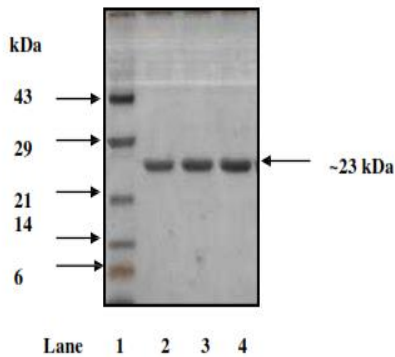
Thank you for all your support.

Arvind K. Bhanushali, Bharat T. Dagha, Paresh B. Bhanushali

Promoter Directors

-----PROLACTIN-----

14 % Reduced SDS PAGE :rProlactin



Lane1: MWL
Lane2: VrPR0001/15
Lane 3 VrPR0002/15
Lane 4: VrPR0003/15

Prolactin (PRL) is a peptide hormone produced by the pituitary gland and various extra pituitary sites. PRL has been shown to be associated with the modulation of a variety of actions in the immune response and inflammatory processes in several pathological conditions.

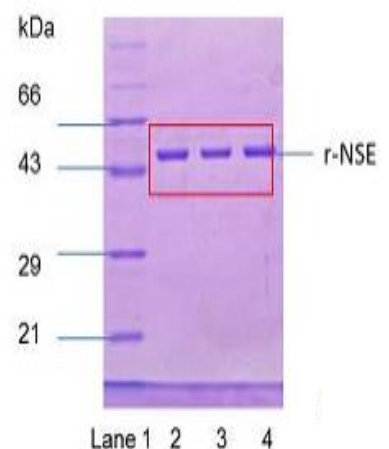
Route of Production: Recombinant

-----NSE-----

Neuron specific enolase is an enzyme of glycolytic pathway. This enzyme is released in the cerebrospinal fluid (CSF) during neuronal injury. It is also a very useful biomarker for detection of neuroblastoma in the tumor patients.

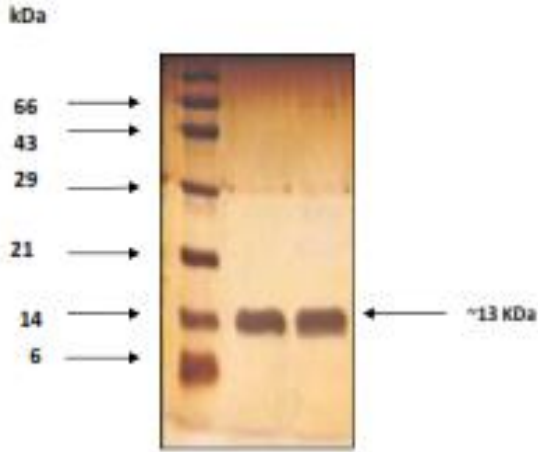
Route of Production: Recombinant

12 % SDS PAGE Profile of r-NSE



- - - - CYSTATIN C - - - -

14% Reduced SDS-PAGE: Cystatin C High Pure



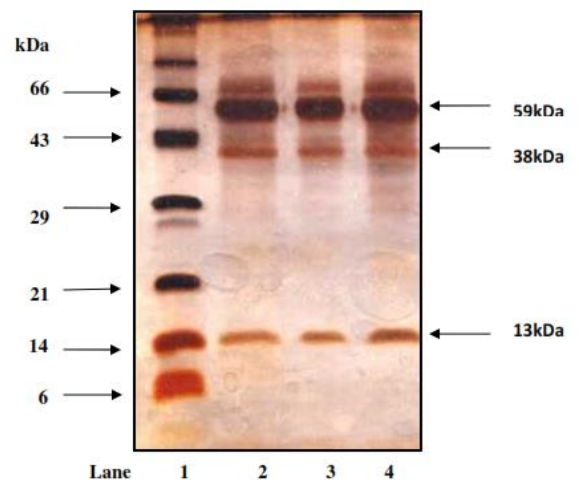
Lane 1 : MWL
Lane 2: FCys:Chp0001
Lane 3 : Cys C Control

Cystatin C is a low molecular weight (13.4 KDa) protein. It functions as an inhibitor of various cysteine proteases. Serum cystatin C is considered a superior than serum creatinine as a marker of kidney function

Route of Production: Native

-----MPO-----

15% Reduced SDS-PAGE: MPO



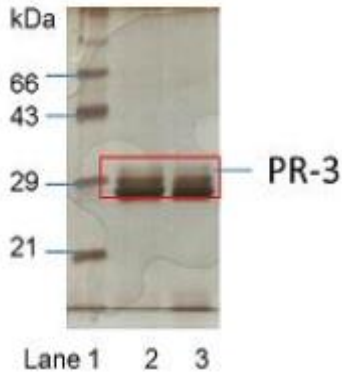
Lane 1 : MWL
Lane 2: VMPO0001/14
Lane 3 : VMPO0002/14
Lane 4: VMPO0003/14

Myeloperoxidase is a heme conjugate peroxidase enzyme. In humans, it is secreted by neutrophils during the myeloid differentiation. MPO is considered as a prognostic marker for the chronic vascular inflammatory disease.

Route of Production: Native

----- PR-3 -----

12 % SDS PAGE Profile of PR-3



Lane 1- Mol. Wt. Marker
Lane 2- 2 μ g Batch 1
Lane 3- 2 μ g Batch 2
Lane 4- 2 μ g Batch 3

PR3 stands for Proteinase-3. PR3 belongs to the class of serine protease enzymes and its expression is seen in human neutrophils. PR-3. cytoplasmic antibodies (PR3-ANCA). Anti PR-3ANCA are believed to be a serologic marker in inflammatory bowel disease.

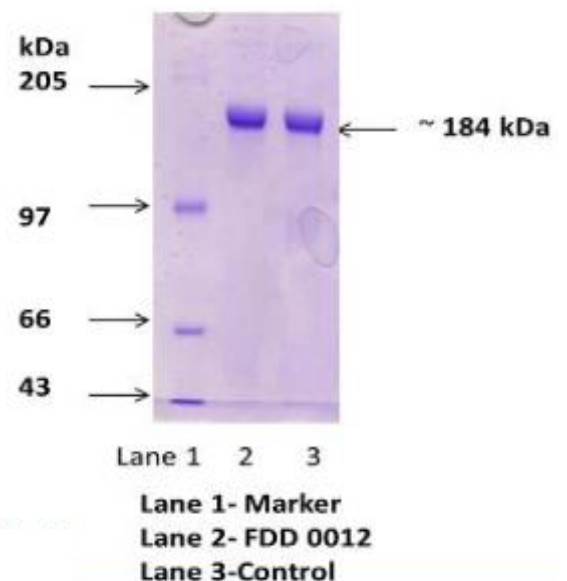
Route of Production: Native

-----D- DIMER-----

D-dimer is a degradation product of fibrin . It is considered as a prognostic marker for the thrombotic disorders. D-dimer testing is also used for the evaluation of suspected patients of deep venous thrombosis . On native page observed molecular weight of D-dimer is 184 kDa.

Route of Production: Native

Native PAGE profile of D-Dimer



----YBL-HbsAg-Ad & Ay Antigens in Journal of Immunological Methods----

Our HbsAg Ad & HbsAg Ay was recently referred in prestigious science journal- Journal of Immunological Methods. Entitled "Array-in-well platform-based multiplex assay for the simultaneous detection of anti-HIV- and treponemal-antibodies, and Hepatitis B surface antigen" Talha SM et.al

Please follow this link- <http://www.ncbi.nlm.nih.gov/pubmed/26711310>

----Bulk Orders & Product Development at YBL----

YBL is your trusted partner for supply of high quality Antigens and Antibodies of batch-to-batch consistency with shortest possible lead time, we can also offer the facility of customizing the products as per your specifications, such as buffer, COAs, packaging and logistics.

Besides the products which we regularly make, we can also do R&D and make new products for you with short turn-around.



China Association of Clinical Laboratory Practice (International) Expo

----Meet us in CACLP 2017----

We are hoping for your presence in CACLP-2017 China!. Please visit us in CACLP Expo at Qingdao China from 11th to 14h March, 2017 at Booth No. H4-219. Our R & D team would be happy to answer your queries and discuss potential projects.

For appointments please write Email to- **Mr. B. T. Dagma**
(Director- Global Business Operation)
Email- bharat@yashrajbio.com

Send us an e-mail with an inquiry, comment or suggestions at bharat@yashrajbio.com

For products information please visit us at <http://www.yashraj.com/>