



**YASHRAJ**  
**BIOTECHNOLOGY LTD.**  
*a bio-quest for ever*



# The **YBL** Newsletter

Volume 4, Issue 2, June 2017



## - - - - I N S I D E T H E I S S U E - - - -

➤ **Message from the promoter Directors**

➤ **Our Recombinant & Native antigens**

➤ **AACC 2017**

Dear Readers,

Welcome to this issue of Yashraj Biotechnology's Newsletter. It is indeed a moment of great pleasure to release the second issue of our newsletter in 2017. In the first quarter of the 2017, we successfully finished the purification of Native RBP and the scale up studies are on. We have also undertaken purification of Azurocidin antigens as a new project at our R&D lab.

In the first week of August, we will be at the world's one of the biggest expo for clinical chemistry at AACC in San Diego. We cordially invite you to visit our booth # 4500.

We look forward to see you there at our booth in AACC-2017.

Thank you for all your support.

**Arvind K. Bhanushali, Bharat T. Dagha, Paresh B. Bhanushali**

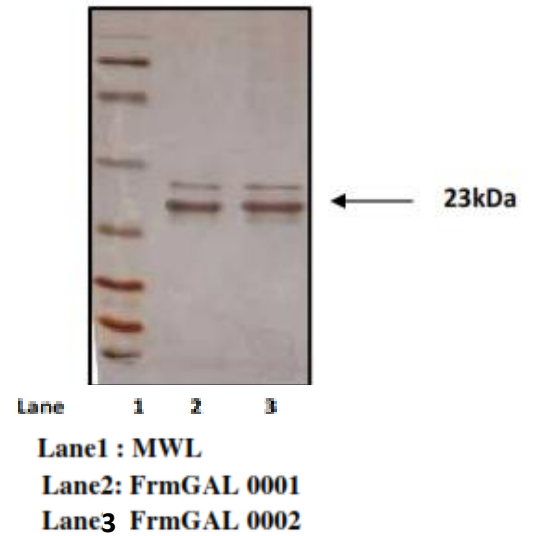
Promoter Directors

# -----NGAL-----

## NGAL

NGAL (~23 KDa) is also known as Lipocalin-2 (neutrophil gelatinase associated lipocalin). It is an early and reliable indicator of acute kidney injury (AKI). In the recent past NGAL has emerged as an excellent prognostic marker for the AKI. During kidney injury level of NGAL goes high in both plasma as well as urine. Since NGAL is resistant to protease, it is quite stable in the blood and serum.

12% Reduced SDS Page : rNGAL (mt)



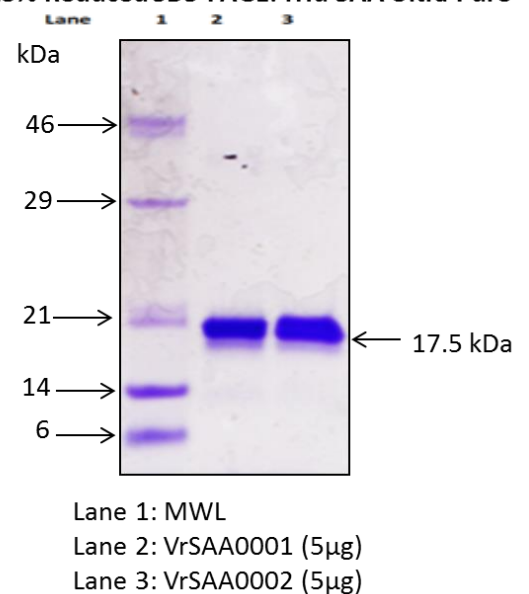
**Route of Production: Recombinant**

# -----SAA-----

## SAA

Serum amyloid A (SAA) (~ 18KDa) proteins comprise a family of apolipoproteins. These proteins play an important role in HDL metabolism and cholesterol homeostasis. Human SAA1 is a major acute phase protein that is highly expressed in response to inflammation and tissue injury. SAA is considered to be a biomarker for inflammation.

13% Reduced SDS-PAGE: rHu SAA Ultra Pure



**Route of Production: Recombinant**

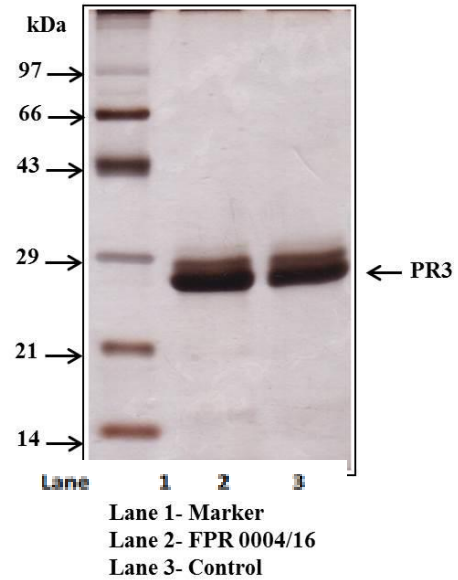
# - - - - PR-3 - - - -

## PROTEINASE-3

Proteinase-3 (PR3) (29 kDa ) belongs to the class of serine protease enzymes and its expression is seen in human neutrophils. PR-3 cytoplasmic antibodies (PR3-ANCA). Anti PR-3ANCA are believed to be a serologic marker in inflammatory bowel disease.

### Route of Production: Native

12% SDS PAGE profile of PR-3



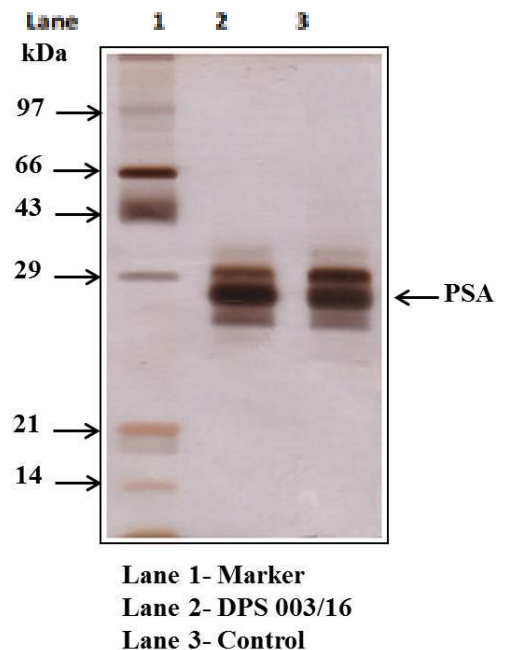
# -----PSA-----

## PSA

PSA (~29 KDa) is major protein in the seminal plasma. An early characteristic feature of prostate carcinoma (PCa) is disruption of the basal cell layer and release of PSA from the prostate gland. The consequent increase due to disturbed architecture of epithelia is measured in the pathology labs using the PSA ELISA kits. PSA is a prognostic test for the prostate cancer.

### Route of Production: Native

12% Unreduced SDS-PAGE: PSA

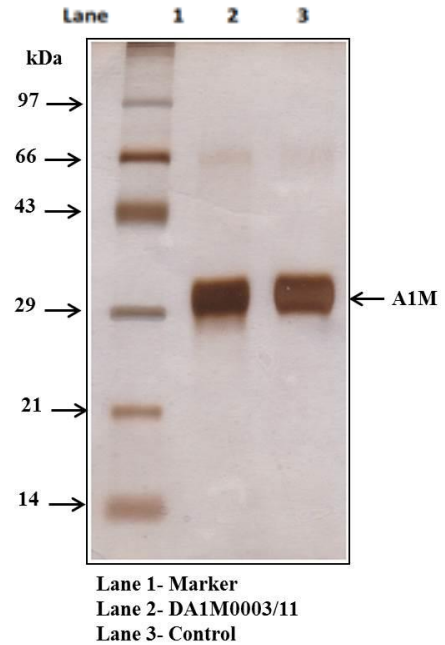


# ----- A1M -----

## A1M

A1M (~ 29 KDa) Alpha-1-microglobulin belongs to lipocalin protein superfamily. A1M is synthesized mainly in the liver cells. Its major function is detoxification and clearance of the free radicals from the human body. Increased A1M in the urine is believed to be an indicator for proteinuria and other renal disorders.

12% Reduced SDS-PAGE: A1M HP



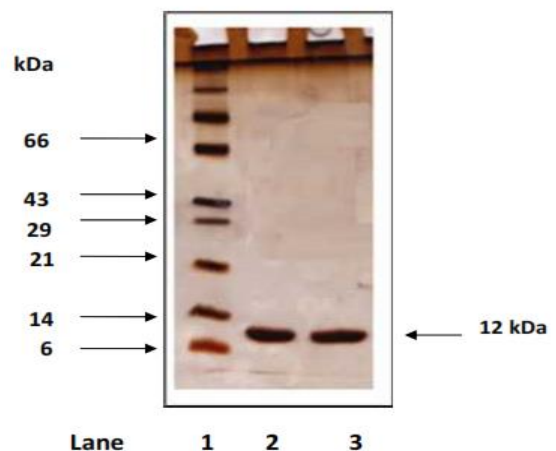
## Route of Production: Native

# -----B2M-----

## B2M


B2M (12 KDa) stands for the Beta-2-microglobulin. It is a globular protein and belongs to MHC class 1 family. B2M is found on all nucleated cells and shed into the blood stream. Elevated level of B2M is seen in the urine of patients during renal failure. B2M is considered to be a biomarker for monitoring the progression of renal disease to chronic renal failure.

15% Reduced SDS-PAGE: B2M



## Route of Production: Native

## ----YBL- CVD Markers---

YBL-Top Cardiac/CVD Markers 	
YBL-Cardiac/CVD Markers	Route of Production
<b>Galectin – 3</b>	Recombinant
<b>Troponin I</b>	Recombinant
<b>NT- Pro BNP</b>	Recombinant
<b>Pro- BNP</b>	Recombinant
<b>FABP-3</b>	Recombinant
<b>Apo-SAA</b>	Recombinant
<b>CRP</b>	Native
<b>Myeloperoxidase (MPO)</b>	Native
<b>D-Dimer</b>	Native

## ----Meet us in AACC 2017----

YBL will join over 750 exhibitors and more than 18,000 clinical laboratory innovators at world's biggest trade show for IVD in AACC 2017, San Diego. Please visit us in AACC Expo, 2017 at Booth # 4500. Our R&D team would be happy to answer your queries and discuss potential projects.

For appointments please write Email to- **Mr. B. T. Dagha**  
(Director- Global Business Operation)  
Email- [bharat@yashrajbio.com](mailto:bharat@yashrajbio.com)

69TH AACC  
ANNUAL SCIENTIFIC MEETING  
& CLINICAL LAB EXPO  
JULY 30 - AUGUST 3, 2017 • SAN DIEGO, CA

AACC

Send us an e-mail with an inquiry, comment or suggestions at [bharat@yashrajbio.com](mailto:bharat@yashrajbio.com)

For products information please visit us at <http://www.yashraj.com/>